

# THE ULTIMATE PORTABLE CAR LIFT



***QUICKJACK™***

(888) 262-3880 | [www.quickjack.com](http://www.quickjack.com)



# OVERVIEW

The QuickJack portable lifting system makes vehicle maintenance on and off the track convenient and lightning fast. The QuickJack can go anywhere and is easily stowed in the trunk or back seat of most cars. Bring it to the track, or drop it on your garage floor to perform routine maintenance in the comfort of your home, all in seconds.



QuickJack handles the lifting and safe-keeping of your vehicle with the simple push of a button, and there are no crossbeams on the ground to get in your way. Each of the two frames feature automatic locking bars that are essentially “jack stands” built right into the sides.



When we talk about QuickJack as a portable car lift, we compare it to car jacks and jack stands. QuickJack is not meant to replace two-post lifts or four-post lifts. If you're in the market for a full-size car lift, you need room around the lift to spare. Living situations factor into whether you want something permanent or portable.



# FEATURES

## AUTOMATIC SAFETY LOCKS

The QuickJack portable lifting system makes vehicle maintenance on and off the track convenient and lightning fast. The QuickJack can go anywhere and is easily stowed in the trunk or back seat of most cars. Bring it to the track, or drop it on your garage floor to perform routine maintenance in the comfort of your home, all in seconds.

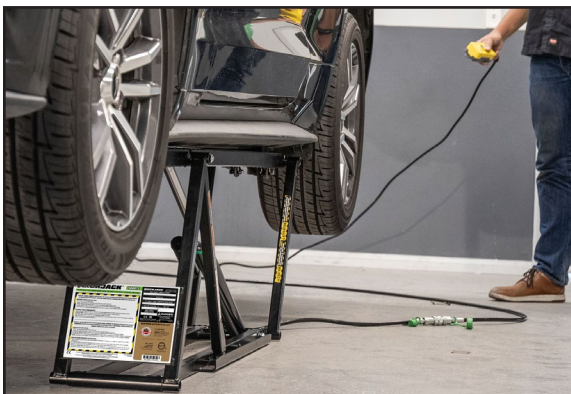


## INCREASED LIFTING HEIGHT

The QuickJack portable lifting system makes vehicle maintenance on and off the track convenient and lightning fast. The QuickJack can go anywhere and is easily stowed in the trunk or back seat of most cars. Bring it to the track, or drop it on your garage floor to perform routine maintenance in the comfort of your home, all in seconds.

## UNDERCARRIAGE ACCESS

The QuickJack portable lifting system makes vehicle maintenance on and off the track convenient and lightning fast. The QuickJack can go anywhere and is easily stowed in the trunk or back seat of most cars. Bring it to the track, or drop it on wheels to perform routine maintenance in the comfort of your home, all in seconds.



## ONE-HANDED OPERATION

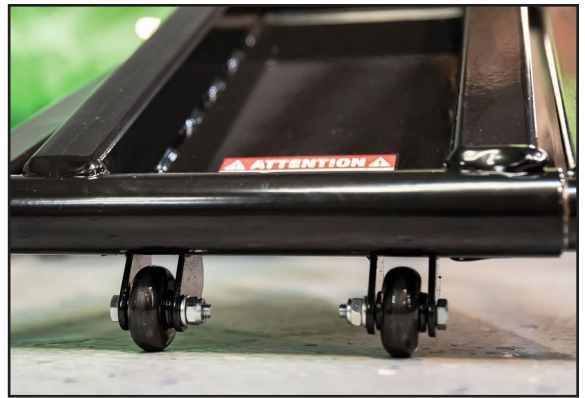
The QuickJack portable lifting system makes vehicle maintenance on and off the track convenient and lightning fast. The QuickJack can go anywhere and is easily stowed in the trunk or back seat of most cars. Bring it to the track, or drop it on your garage floor to perform routine maintenance in the comfort of your home, all in seconds.



# FEATURES

## PORTABLE

The QuickJack portable lifting system makes vehicle maintenance on and off the track convenient and lightning fast. The QuickJack can go anywhere and is easily stowed in the trunk or back seat of most cars. Bring it to the track, or drop it on your garage floor to perform routine maintenance in the comfort of your home, all in seconds.



## FAST AND EASY SET-UP

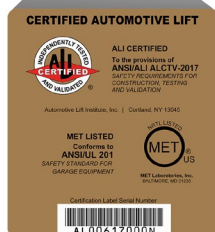
The QuickJack portable lifting system makes vehicle maintenance on and off the track convenient and lightning fast. The QuickJack can go anywhere and is easily stowed in the trunk or back seat of most cars. Bring it to the track, or drop it on your garage floor to perform routine maintenance in the comfort of your home, all in seconds.

## STACKABLE RUBBER BLOCKS

The QuickJack portable lifting system makes vehicle maintenance on and off the track convenient and lightning fast. The QuickJack can go anywhere and is easily stowed in the trunk or back seat of most cars. Bring it to the track, or drop it on the garage floor to perform routine maintenance in the comfort of your home, all in seconds.



**INDEPENDENTLY TESTED  
AND CERTIFIED BY THE  
AUTOMOTIVE LIFT INSTITUTE**



## ALI CERTIFIED

The QuickJack portable lifting system makes vehicle maintenance on and off the track convenient and lightning fast. The QuickJack can go anywhere and is easily stowed in the trunk or back seat of most cars. Bring it to the track, or drop it on your garage floor to perform routine maintenance in the comfort of your home, all in seconds.

# SPECIFICATIONS

NEW

	3500SLX	6000TL	6000TLX	8000TL	8000TLX	6000ELX
Lifting Capacity	3,500 lbs. (1,588 kg)	6,000 lbs. (2,722 kg)	6,000 lbs. (2,722 kg)	8,000 lbs. (3,175 kg)	8,000 lbs. (3,629 kg)	6,000 lbs. (3,629 kg)
Lowered Height	3" (76 mm)	2.75" (76 mm)	2.75" (76 mm)	3.5" (89 mm)	3.5" (89 mm)	3.5" (89 mm)
Lifting Height (frame only)	16" (404 mm)	20.1" (512 mm)	20.1" (512 mm)	20.75" (527 mm)	20.75" (527 mm)	20.75" (527 mm)
Lifting Height (stacked blocks)	21" (533 mm)	24" (610 mm)	24" (610 mm)	24.5" (622 mm)	24.5" (622 mm)	24.5" (622 mm)
Lift Point Spread (min.)	27" (686 mm)	37" (940 mm)	43" (1,092 mm)	37" (940 mm)	43" (1,092 mm)	53" (1,346 mm)
Lift Point Spread (max.)	50.5" (1,283 mm)	60.18" (1,524 mm)	66" (1,676 mm)	60" (1,524 mm)	66" (1,676 mm)	76" (1,930 mm)
Frame Width	10.5" (267 mm)	11" (279 mm)	11" (279 mm)	12.5" (318 mm)	12.5" (318 mm)	12.5" (318 mm)
Frame Length	62.5" (1,588 mm)	70.5" (1,778 mm)	76" (1,930 mm)	70.75" (1,797 mm)	76" (1,930 mm)	86.75" (2,203 mm)
Frame Weight	60 lbs. (27 kg)	79 lbs. (35 kg)	81 lbs. (37 kg)	100 lbs. (45 kg)	103 lbs. (47 kg)	112 lbs. (51 kg)

## 3500SLX Light-Duty

3,500 lb.  
Capacity



## 6000TL Most Popular Model

6,000 lb.  
Capacity



## 8000TL

Ideal for Truck & SUVs



8,000 lb.  
Capacity

## 6000ELX Extra-Long Wheelbases (Electric Vehicles)

6,000 lb.  
Capacity



## 6000TLX

Extended Frame Length



6,000 lb.  
Capacity

## 8000TLX

Extended Frame Length



8,000 lb.  
Capacity



# OPTIONAL ACCESSORIES

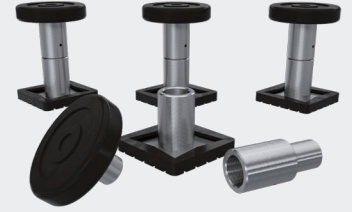
## Wall Hanger Set

- Sold in sets of two
- Solid-steel construction
- 150% rated capacity



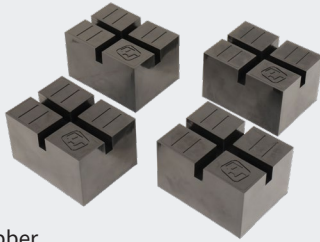
## SUV & Light Truck Adapter Kit

- (4) Contact pads
- (4) Sliding receivers
- (4) 3" Stackable adapters



## Pinch-Weld Blocks

- Sold in sets of 4
- Specially formulated urethane rubber
- Water/Chemical resistant and 100% weatherproof



## Pinch-Weld Pucks

- Sold in sets of 4
- Specially formulated urethane rubber
- Round puck pad secures difficult pinch-weld rails without risk of damage



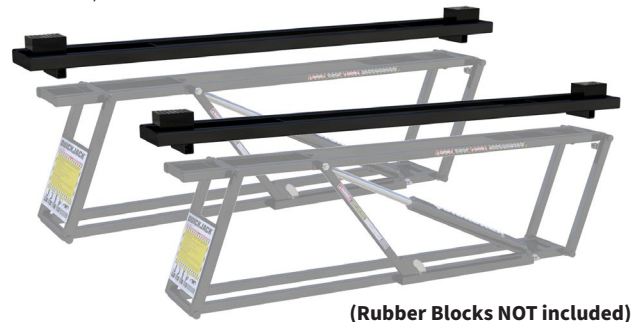
## ATV / Motorcycle Lift Adapter Kit

- Aluminum diamond tread plate
- Heavy-duty tie-down rings
- Adjustable wheel clamp



## Frame Extension Kit

- (2) Frame extension adapters with 66" lift point spread each
- Rugged 14-gauge steel construction
- Fits 5000/7000TL models



(Rubber Blocks NOT included)



## Crossbeam Adapter

- Adjustable lifting pads
- Additional 4.75" clearance height
- Comes with custom contact pads





# PHOTO GALLERY

