

Please read and save these instructions. Read through this owner's manual carefully before using product. Protect yourself and others by observing all safety information, warnings, and cautions. Failure to comply with instructions could result in personal injury and/or damage to product or property. Please retain instructions for future reference.



7" VARIABLE SPEED POLISHER

FOR CUSTOMER SERVICE

Technical Question?

CALL 1-866-458-2472
customerservice@oem-tools.com

UNPACKING

After unpacking unit, inspect carefully for any damage that may have occurred during transit. Check for loose, missing, or damaged parts. If any damage is observed, a shipping damage claim must be filed with carrier. DO NOT use the OEMTOOLS™ Variable Speed Polisher if broken, bent, cracked or damaged parts (including labels) are noted. Any Polisher that appears damaged in any way, operates abnormally or is missing parts should be removed from service immediately. If you suspect that the Polisher was subjected to shock load (a load that was dropped suddenly, unexpectedly, etc.), immediately discontinue use until it has been checked by a factory authorized service center.



⚠ WARNING

The following safety information is provided as a guideline to help you operate your Polisher under the safest possible conditions. Any tool or piece of equipment can be potentially dangerous to use when safety or safe handling instructions are not known or not followed. The following safety instructions are to provide the user with the information necessary for safe use and operation. Please read and retain these instructions for the continued safe use of your service system. Failure to follow instructions listed below may result in serious injury. In addition, make certain that anyone who uses the equipment understands and follows these safety instructions as well.

Explanation of Safety Signal Words

⚠ WARNING: Indicates a potentially hazardous situation which, if not avoided, could result in death or serious injury.

⚠ CAUTION: Indicates a potentially hazardous situation which, if not avoided, may result in minor or moderate injury.

CAUTION: Used without the safety alert symbol indicates a potentially hazardous situation which, if not avoided, may result in property damage.

NOTES: Provide clarity and helpful information.

Thank you very much for choosing an OEMTOOLS™ Product!

For future reference, please register your new tool at www.oem-tools.com and complete the owner's record below:

Model: _____ **Purchase Date:** _____

Save the receipt, warranty and these instructions. It is important that you read the entire manual to become familiar with this product before you begin using it. This product is designed for certain applications only. OEMTOOLS™ cannot be responsible for issues arising from modification. We strongly recommend this product is not modified and/or used for any application other than that for which it was designed. If you have any questions relative to a particular application, DO NOT use the product until you have first contacted customer service to determine if it can or should be performed on the product.

⚠ WARNING: This product can expose you to chemicals, including lead, which are known to the State of California to cause cancer and birth defects or other reproductive harm. For more information, go to www.P65Warnings.ca.gov.



7" VARIABLE SPEED POLISHER

POWER TOOL SAFETY

⚠ WARNING: Read and understand all safety warnings and instructions. Failure to follow the warnings and instructions may result in electric shock, fire and/or serious injury.

WORK AREA SAFETY

1. Keep work area clean and well lit. Cluttered or dark areas invite accidents.
2. DO NOT operate power tools in explosive atmospheres, such as in the presence of flammable liquids, gases or dust. Power tools create sparks which may ignite the dust or fumes.
3. Keep children and bystanders away while operating a power tool. Distractions can cause you to lose control.

ELECTRICAL SAFETY

1. Double insulated tools are equipped with a polarized plug (one blade is wider than the other). This plug will fit in a polarized plug only one way.
2. If the plug does not fit fully into the outlet, reverse the plug. If it still does not fit, contact a qualified electrician to install a polarized outlet. DO NOT alter the plug in any way. Double insulation eliminates the need for the three-prong grounded power cord and grounded power supply system.
3. Avoid body contact with grounded surfaces such as pipes, radiators, ranges and refrigerators. There is increased risk of electric shock if your body is grounded.
4. DO NOT expose power tools to rain or wet conditions. Water entering the power tool will increase the risk of electric shock.
5. DO NOT abuse the cord. Never use the cord to carry the tool or pull the plug from an outlet. Keep cord away from heat, oil, sharp edges or moving parts. Replace damaged cords immediately. Damaged cords increase the risk of electric shock.
6. When operating a power tool outdoors, use an outdoor extension cord marked "W-A" or "W". These cords are rated for outdoor use and reduce the risk of electric shock.
7. When not in use, disconnect from the power source and store in a safe, dry childproof location.

PERSONAL SAFETY

1. Stay alert, watch what you are doing and use common sense when operating a power tool. DO NOT use a power tool while you are tired or under the influence of drugs, alcohol or medication. A moment of inattention while operating power tools may result in serious personal injury.
2. Use personal protective equipment. Always wear eye protection. Protective equipment such as dust mask, non-skid safety shoes, hard hat, or hearing protection used for appropriate conditions will reduce personal injuries.
3. Prevent unintentional starting. Ensure the switch is in the OFF position before connecting to power source and/or battery pack, picking up or carrying the tool. Carrying power tools with your finger on the switch or energizing power tools that have the switch on invites accidents.

4. Remove any adjusting key or wrench before turning the power tool ON. A wrench or a key left attached to a rotating part of the power tool may result in personal injury.
5. DO NOT overreach. Keep proper footing and balance at all times. This enables better control of the power tool in unexpected situations.
6. Dress properly. DO NOT wear loose clothing or jewelry. Keep your hair, clothing and gloves away from moving parts. Loose clothes, jewelry or long hair can be caught in moving parts.
7. If devices are provided for the connection of dust extraction and collection facilities, ensure these are connected and properly used. Use of dust collection can reduce dust related hazards.

TOOL USE AND CARE

1. DO NOT force the power tool. Use the correct power tool for your application. The correct power tool will do the job better and safer at the rate for which it was designed.
2. DO NOT use the power tool if the switch does not turn it ON and OFF. Any power tool that cannot be controlled with the switch is dangerous and must be repaired.
3. Disconnect the plug from the power source and/or the battery pack from the power tool before making any adjustments, changing accessories, or storing power tools. Such preventive safety measures reduce the risk of starting the power tool accidentally.
4. Store idle power tools out of the reach of children and DO NOT allow persons unfamiliar with the power tool or these instructions to operate the power tool. Power tools are dangerous in the hands of untrained users.
5. Maintain power tools. Check for misalignment or binding of moving parts, breakage of parts and any other condition that may affect the power tool's operation. If damaged, have the power tool repaired before use. Many accidents are caused by poorly maintained power tools.
6. Keep cutting tools sharp and clean. Properly maintained cutting tools with sharp cutting edges are less likely to bind and are easier to control.
7. Use the power tool, accessories and tool bits, etc. in accordance with these instructions, taking into account the working conditions and the work to be performed. Use of the power tool for operations different from those intended could result in a hazardous situation.
8. Hold the power tool by insulated gripping surfaces when performing an operation where the cutting tool may contact hidden wiring or its own cord. Contact with a "live" wire will make exposed metal parts of the tool "live" and shock the operator.
9. Use clamps or other practical ways to secure and support the workpiece to a stable platform. Holding the workpiece by hand or against your body leaves it unstable and may lead to loss of control.



7" VARIABLE SPEED POLISHER

SERVICE

Have your power tool serviced by a qualified repair person using only identical replacement parts. This will ensure that the safety of the power tool is maintained.

SPECIFIC SAFETY RULES

⚠ WARNING

1. Know your Polisher. Carefully read and understand this Instruction Manual. Learn the tool's applications and limitations, as well as the specific potential hazards related to this tool. Following this rule will reduce the risk of electric shock, fire, or serious injury.
2. Always wear eye protection. Any power tool can throw foreign objects into your eyes and cause permanent eye damage. ALWAYS wear safety goggles (not glasses) that comply with ANSI safety standard Z87.1. Everyday glasses have only impact resistant lenses. They ARE NOT safety glasses.
3. Glasses or goggles not in compliance with ANSI Z87.1 could cause serious injury when they break.
4. Always wear gloves to protect your hands from hot sparks.
5. Always wear hearing protection and a dust mask. Use only in well ventilated areas. Use of personal protective equipment and working in a safe environment will reduce the risk of injury.
6. Accessories must be rated for at least the speed recommended on the tool warning label. Wheels and other accessories running over rated speed can fly apart and cause injury.
7. When an extension cable is required, you must ensure it has the right ampere rating for your power tool and is in a safe electrical condition.
8. Always switch OFF before you put the tool down.
9. If possible, always use clamps or a vise to hold your work.
10. Rags, cloths, cord, string and the like should never be left around the work area.
11. If you are interrupted when operating the tool, complete the process and switch OFF before looking up.
12. Periodically check that all nuts, bolts and other fixings are properly tightened.
13. Always use both hands to operate the tool.
14. DO NOT force the tool, let the tool do the work at a reasonable speed. Overloading will occur if too much pressure is applied and the motor slows resulting in inefficient operation and possible damage to the motor.
15. DO NOT continue to use worn, torn or heavily clogged sanding discs.
16. DO NOT touch the moving disc.
17. Ensure that you have removed foreign objects such as nails and screws from the work piece before commencing sanding.

EXTENSION CORD SAFETY

⚠ WARNING

Keep the extension cord clear of the working area. Position the cord so it will not get caught on the workpiece, tools or any other obstructions while you are working with the power tool.

1. Make sure any extension cord used with this tool is in good condition. When using an extension cord, be sure to use one of heavy enough gauge to carry the current the tool will draw. An undersized cord will cause a drop in line voltage resulting in loss of power and overheating.
2. The table below shows the correct size to use according to cord length and nameplate ampere rating. If in doubt, use the next heavier gauge. The smaller the gauge number the heavier the cord.
3. Be sure your extension cord is properly wired and in good condition. Always replace a damaged extension cord or have it repaired by a qualified electrician before using it. Protect your extension cord from sharp objects, excessive heat and damp or wet areas.
4. Use a separate electrical circuit for your power tools. This circuit must not be less than 14 gauge wire and should be protected with either a 15 A time delayed fuse or circuit breaker. Before connecting the power tool to the power source, make sure the switch is in the OFF position and the power source is the same as indicated on the nameplate. Running at lower voltage will damage the motor.

MINIMUM GAUGE (AWG) EXTENSION CORDS (120 V use only)

Amperage rating		Total length			
More than	Not more than	25' (7.5 m)	50' (15 m)	100' (30 m)	150' (45 m)
0	6	18	16	16	14
6	10	18	16	14	12
10	12	16	16	14	12
12	16	14	12	Not Applicable	



7" VARIABLE SPEED POLISHER

IMPORTANT SAFETY INSTRUCTIONS

The warnings, precautions, and instructions discussed in this manual cannot cover all possible conditions and situations that may occur. The operator must understand that common sense and caution are factors which cannot be built into this product, but must be supplied by the operator.

⚠ WARNING

Use only attachments recommended or sold by the manufacturer.

1. DO NOT disassemble the Polisher. Take it to a qualified professional when service or repair is required. Incorrect reassembly may result in electric shock or fire.
2. Only use accessories which are specifically designed for use with a 7" Variable Speed Polisher.
3. Wear approved safety eye/face shield, ear defenders and hand protection.

TROUBLESHOOTING

Trouble	Problem	Suggested Remedy
Polisher will not start	Power cord not plugged in	Ensure that the cord is connected to the power supply
	Power fault, fuse or circuit breaker tripped	Check the power supply
	Cord damaged	Use authorized service center to repair or replace
	Faulty switch	Use authorized service center to repair or replace switch
	Faulty motor	Use authorized service center to repair or replace motor
Poor performance	Extension cord too long or undersized	Use extension cord heavy enough to carry the current
	Tool is overheating	Turn off the tool and let it cool down to room temperature. Inspect and clean the ventilation slots.
	Too much wax on the polishing sponge	Replace or clean the accessory. Ensure that too much polish is not applied onto the accessory. Remove a portion of wax and retry.
	Polishing bonnet or buffing wheel worn	Replace with new bonnet or buffing wheel
Vibration or abnormal noise	Accessory not secured	Ensure that the accessory is secured onto the spindle and that all flanges are tight
	Loose screws	Ensure that all fixing screws are fully tightened

DISPOSAL

At the end of the useful life of the OEMTOOLS™ 7" Variable Speed Polisher, dispose of the components according to all state, federal and local regulations.

PURPOSE

Whether you are a professional detailer, or a weekend DIY guy, the OEMTOOLS™ Variable Speed Polisher is up to the task. Featuring a soft start, this Polisher comes equipped with a variable speed dial that makes it easy to maintain the right speed to avoid swirl marks and overheating the surface. RPM range can be adjusted as low as 1,000 RPM all the way up to 3,000 RPM. Plus, it has a common 5/8" x 11 spindle so you can attach a variety of accessories.

PRODUCT SPECIFICATIONS

Motor:	11 Amp
No-Load Speed:	1,000 – 3,000 RPM
Spindle Thread:	5/8"
Spindle Lock:	Yes
Electronic Speed Control:	Yes
Variable Speed Control Dial:	Yes
Power Cord Length:	6 Ft.
Weight:	8 Lbs.

INSTRUCTIONS

ASSEMBLY

D-HANDLE GRIP

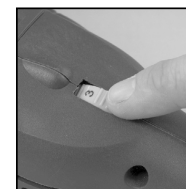
Using the included Screws and Hex Key Wrench, attach the D-Handle to the Gear Housing as shown. The D-Handle can be installed for either right-hand or left-hand use.



OPERATION

VARIABLE SPEED

1. The Polisher is fitted with a variable speed dial that allows the speed to be adjusted to suit the application and material.
2. The tool operates between the speeds of 1,000 RPM and 3,000 RPM.
3. The higher the number on the variable speed dial, the higher the speed.
4. For polishing and buffing applications, it is recommended that a lower speed (1,000-1,500 RPM) is used.
5. For sanding applications, it is recommended that the high speed (3,000 RPM) is used to provide efficient material removal.





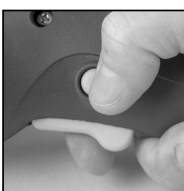
7" VARIABLE SPEED POLISHER

⚠ WARNING

DO NOT operate the machine with a polishing bonnet attached above 1,500 RPM.

ON/OFF

1. Before starting the Polisher, first ensure the accessory and the tool are in good condition. Plug the cord set into the outlet and set up for the application to be performed.
2. Hold the tool firmly.
3. Press the lock-OFF button and then press the ON/OFF switch.
4. To adjust the speed, rotate the variable speed dial.
5. To turn the tool OFF, release the ON/OFF switch.
6. The Polisher will stop.



- NOTE:** The disc continues to turn for a few seconds even though the switch is turned OFF.
7. Keep hands well away from the moving disc.
 8. DO NOT place the Polisher down until the disc has come to a complete stop.

ATTACHING THE BACKING PAD

Switch OFF the tool and disconnect it from the power source.

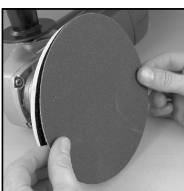
1. To fit the backing pad onto the spindle, press and hold the spindle lock button and screw the backing pad onto the spindle in a clockwise direction. Turn the pad by hand, ensuring that it is tight on the spindle and that it rotates fully and does not wobble unduly.
2. To remove the backing pad, press and hold the spindle lock button and unscrew the pad from the spindle.



- NOTE:** The pad unscrews in a counterclockwise direction.
3. Run the Polisher at no load for at least one minute to ensure the new sanding pad is in good condition. Make sure you are wearing safety gear and that you face the Polisher away from you.

FITTING THE SANDPAPER

1. The Polisher is fitted with a hook and loop backing pad allowing easy changing of accessories. Ensure there is no debris left in the hooks and loops of the pad before fitting accessories.
2. Align the sandpaper with the backing pad and press down firmly to ensure a good grip.
3. Special care must be taken with hook and loop pads, as a build-up of dust, or wearing the sandpaper down completely before changing it, can result in damage to the hooks and loops on the pad and require a new pad to be fitted.



NOTE: Hook and loop pads, backing pads, bonnet, foam pad and wool pad are not covered under the warranty.

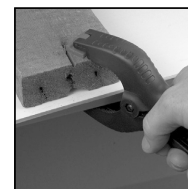
SELECTING THE RIGHT GRADE OF SANDPAPER

Switch OFF the tool and disconnect it from the power supply.

1. Different grades of sandpaper can be purchased from your local hardware store.
2. Typical grades are coarse (40–60 grit), medium (80–100 grit), and fine (120–240 grit).
3. Use coarse grade to remove rough finishes, medium grade to smooth the work, and fine grade to finish it off.
4. It is best to make a trial run on a scrap piece of material to determine the optimum grades of sandpaper for a particular job.

HOLDING AND GUIDING THE TOOL

1. Always clamp the work piece where applicable.
2. Before starting the tool, ensure that the sanding pad, sanding disc and the tool are in good condition. Plug the cord into the mains socket.
3. To start the tool, squeeze the ON/OFF trigger.
4. DO NOT overload the tool so that the disc slows down. Let the tool do the work rather than applying pressure. The weight of the tool alone provides sufficient pressure.
5. Hold the tool securely and make sure that you have full control at all times.
6. During the sanding operation, maintain an angle of 10–15 degrees between the tool and the work piece. After completing the application, turn the Polisher OFF. To turn the tool OFF, let go of the ON/OFF switch. The tool will stop.



NOTE: The disc continues to spin for a few seconds even though the switch is turned OFF.

7. Keep hands well away from the moving disc.

PREPARING THE SURFACE

NOTE: For optimum results, ensure that the surface is clean and dry before polishing. Most high-gloss surfaces can be cleaned with a mild soap and water solution. A mild ammonia such as that used in glass cleaners can be used to remove stubborn dirt such as road tar, grease and bug stains.

⚠ WARNING

Always check the label for recommended applications before using a cleaning product. Using the incorrect product for the application may damage the surface. Use only recommended car care products.

NOTE: Never apply cleaner directly onto the surface to be polished. Apply to a clean cloth and then use the cloth to clean the surface.

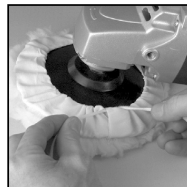
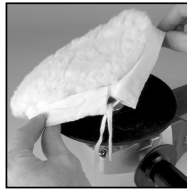


7" VARIABLE SPEED POLISHER

ATTACHING THE BONNET

The Polisher is supplied with a polishing bonnet used for fine buffing and to finish the surface.

1. The polishing bonnet is fitted over the backing pad.
2. To fit the backing pad, turn the Polisher upside down.
3. Place the backing pad onto the spindle, making sure that it fits securely.
4. Fit the polishing bonnet over the top of the backing pad and ensure that the outer edge is drawn over the top of the backing pad.
5. Turn the Polisher over. Run the Polisher at no load for at least one minute to ensure the backing pad and polishing bonnet are in good condition. Make sure you are wearing safety gear and that you face the Polisher away from you.



ATTACHING POLISHING PAD OR FOAM PAD

1. Attach hook and loop foam or wool pad to the backing pad, being careful to center the backing pad with the foam or wool pad.
2. Screw the backing pad onto the spindle while depressing the spindle lock button.
3. Turn the Polisher over. Run the Polisher at no load for at least one minute to ensure the wool or foam pad is in good condition.
4. Make sure you are wearing safety gear and that you face the Polisher away from you.

POLISHING

1. Ensure the variable speed dial is set to the slowest speed.
2. Hold the Polisher firmly against the surface and squeeze the ON/OFF trigger.
3. Always start and stop the Polisher on or against the surface being buffed.
4. Begin by buffing larger flat surfaces, such as hood, trunk and roof. Use a broad sweeping motion in a crisscross pattern.
5. DO NOT press down on the surface with the Polisher. DO NOT overload the tool so that the disc slows down. Let the tool do the work rather than applying pressure. The weight of the tool alone provides sufficient pressure.
6. Once flat surfaces have been covered, buff curved surfaces such as car doors and quarter panels. Use small circular motions.
7. After buffing the entire surface, turn the tool OFF and let go of the ON/OFF switch. The tool will stop.

NOTE: The disc continues to spin for a few seconds, even though the switch is turned OFF. Keep hands well away from the moving disc.

8. Wait until the pad stops rotating before lifting the Polisher from the surface.
9. Unplug the Polisher.
10. Buff surfaces by hand for hard to reach areas, such as the underside of bumpers or side mirrors.

MAINTENANCE

⚠ WARNING

Always ensure that the tool is switched OFF and the plug is removed from the power point before making any adjustments or maintenance procedures.

1. Avoid using solvents when cleaning plastic parts; most plastics are susceptible to damage from various types of commercial solvents and may be damaged by their use.
2. Use clean cloth to remove dirt and carbon dust.
3. DO NOT at any time allow brake fluids, gasoline, petroleum based products or penetrating oils to come into contact with plastic parts. They contain chemicals that can damage, weaken or destroy plastic.
4. Allow the pad to dry completely after each use.
5. Be careful not to use too much polish at one time; if the sponge becomes saturated, it will not last as long.

⚠ WARNING

Turn the ON/OFF switch to the OFF position and unplug the tool from the power supply before performing trouble shooting procedures.

CLEANING

1. Keep the tool's air vents unclogged and clean at all times.
2. Remove dust and dirt regularly. Cleaning is best done with a rag.
3. Never use caustic agents to clean plastic parts.

⚠ CAUTION

DO NOT use cleaning agents to clean the plastic parts of the tool. A mild detergent on a damp cloth is recommended. Water must never come into contact with the tool.

GENERAL INSPECTION

Regularly check that all of the fixing screws are tight. They may vibrate loose over time.

⚠ ELECTRICAL WARNING

POWER SOURCE CONNECTION POWER REQUIREMENTS

This product is designed to operate on a properly grounded 120 volt, 60Hz, single-phase alternating current (AC) power source fused with a time delayed fuse or circuit breaker. It is recommended that a qualified electrician verify the ACTUAL VOLTAGE at the receptacle into which the product will be plugged and confirm that the receptacle is properly fused and grounded.

DO NOT OPERATE THIS PRODUCT if the ACTUAL power source voltage is less than 105 Volts AC or greater than 132 Volts AC. Contact a qualified electrician if this problem exists. Improper performance and/or damage to the product will result if operated on inadequate or excessive power.

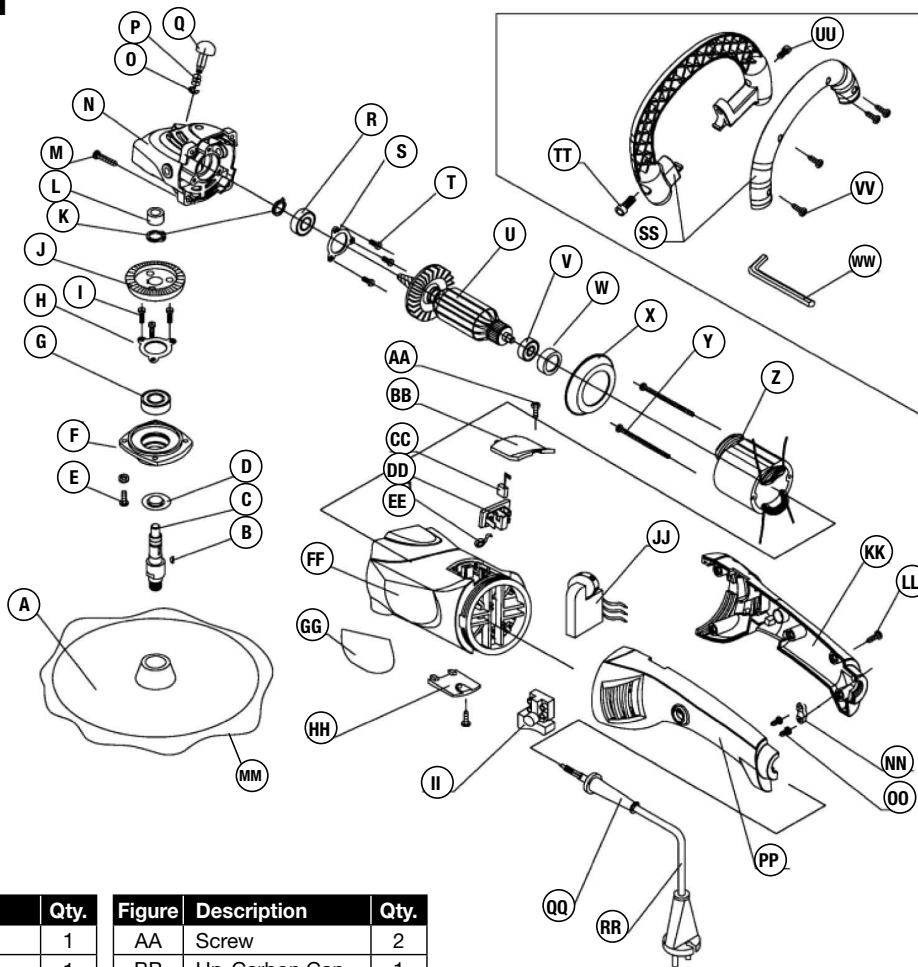
DO NOT abuse cord. Never use the cord to carry tools or pull the plug from an outlet. Keep cord away from heat, sharp edges or moving parts. Replace damaged cords immediately. Damaged cords increase the risk of electric shock.

compounds or plaster. During any use on these materials it is extremely important that the tool is cleaned frequently by blowing it out with an air jet.



7" VARIABLE SPEED POLISHER

PARTS DIAGRAM




PARTS LIST

Figure	Description	Qty.	Figure	Description	Qty.
A	Backing Pad	1	AA	Screw	2
B	Woodruff Key	1	BB	Up-Carbon Cap	1
C	Output Spindle	1	CC	Carbon Brush	2
D	Card	1	DD	Brush Holder	2
E	Screw	4	EE	Spring	2
F	Front Cover	1	FF	Plastic Housing	1
G	Bearing	1	GG	Name Plate	2
H	Bearing Cover	1	HH	Down-Carbon Cap	1
I	Screw	3	II	Switch	1
J	Big Gear	1	JJ	Speed Control	1
K	Circlip for Shaft	2	KK	Back Housing	1
L	Needle Bearing	1	LL	Screw	5
M	Screw	4	MM	Terry Bonnet	1
N	Gear Housing	1	NN	Cord Clip	1
O	E Ring	1	OO	Screw	2
P	Spring	1	PP	Back Housing	1
Q	Brake Pin	1	QQ	Rubber Sleeve	1
R	Bearing	1	RR	Cord	1
S	Bearing Cover	1	SS	Side Handle	1
T	Screw	3	TT	Screw	1
U	Armature	1	UU	Screw	1
V	Bearing	1	VV	Screw	4
W	Rubber Brush	1	WW	Hex Key 10 mm	1
X	Fan Guide	1			
Y	Screw	2			
Z	Stator	1			

Includes (1) wool pad, (1) foam piece and (1) sandpaper not shown.

NOTE: Not all components of the product are replacement items but are illustrated as a convenient reference for location and position in the assembly sequence.

OEMTOOLS™ and/or its distributors have provided the parts list and assembly diagram as a reference only. Neither OEMTOOLS™ nor its distributors make any representation or warranty of any kind to the buyer and/or user of this tool that he or she is qualified to do any repairs or replace any parts of this product. OEMTOOLS™ and its distributors expressly state that all repairs or parts replacement should be done by certified or licensed technicians. The buyer assumes all risk and liability arising out of his or her repairs or parts replacement to the original production.

 Intertek
3146023
S1M-ZZ30-180B

This symbol designates that this tool is listed with U.S. requirements by ETL Testing Laboratories, Inc. Conforms to UL Std. 60745-1 and 60745-2-3.





7" VARIABLE SPEED POLISHER

OEMTOOLS™ ONE YEAR WARRANTY

For up to one year from the date of purchase of this OEMTOOLS™ product, if you find any defect in material or workmanship (through normal usage), return it to the place of purchase or to OEMTOOLS™ for repair or replacement at our discretion. In order to obtain this service, send the product and proof of purchase (transportation pre-paid) to:

OEMTOOLS™ Q.A. Dept, 3580 E. Raines Road #3, Memphis, TN 38118.

We will not be responsible for lost or damaged goods during transportation; please insure your package. If our inspection verifies the defect, we will either repair or replace the product, or we may elect to refund the purchase price if we cannot readily and quickly provide you with a replacement. We will return repaired products at our expense, but if we determine there is no defect, or that the defect resulted from causes not within the scope of our warranty, then you must bear the cost of returning the product.

OEMTOOLS™ does not provide warranty for products labeled other than OEM® or OEMTOOLS™. OEMTOOLS™ will not provide any warranty for products subjected to abnormal use. Abnormal use includes (but is not limited to) abuse, accident, alteration, neglect, and unauthorized or unreasonable use or repairs. This warranty does not cover bits, blades, files, batteries, or calibration. We recommend that you maintain your tools and sharpen or replace blades, bits, files, and batteries as necessary. OEMTOOLS™ reserves the right to make any changes in construction or design at any time without any obligation in incorporating such changes to tools or equipment previously sold.

OEMTOOLS™ makes every effort to ensure that its products meet high quality and durability standards, and warrants to the original purchaser that this product is free from defects in materials and workmanship for the period of one year from the date of purchase. This warranty does not apply to damage due directly or indirectly to misuse, abuse, negligence or accidents, repairs or alterations outside our facilities, criminal activity, improper installation, normal wear and tear, or to lack of maintenance.

We shall in no event be liable for death, injuries to persons or property, or for incidental, contingent, special or consequential damages arising from the use of our product. Some states do not allow the exclusion or limitation of incidental or consequential damages, so the above limitation of exclusion may not apply to you. THIS WARRANTY IS EXPRESSLY IN LIEU OF ALL OTHER WARRANTIES, EXPRESS OR IMPLIED, INCLUDING THE WARRANTIES OF MERCHANTABILITY AND FITNESS. This warranty gives you specific legal rights, and you may also have other rights, which vary from state to state.

Don't forget to register your new OEMTOOLS™ product at www.oem-tools.com.

CONTACT US

3580 E. Raines Road, Suite 3, Memphis, TN 38118
Tel: 1-866-458-2472
www.oem-tools.com