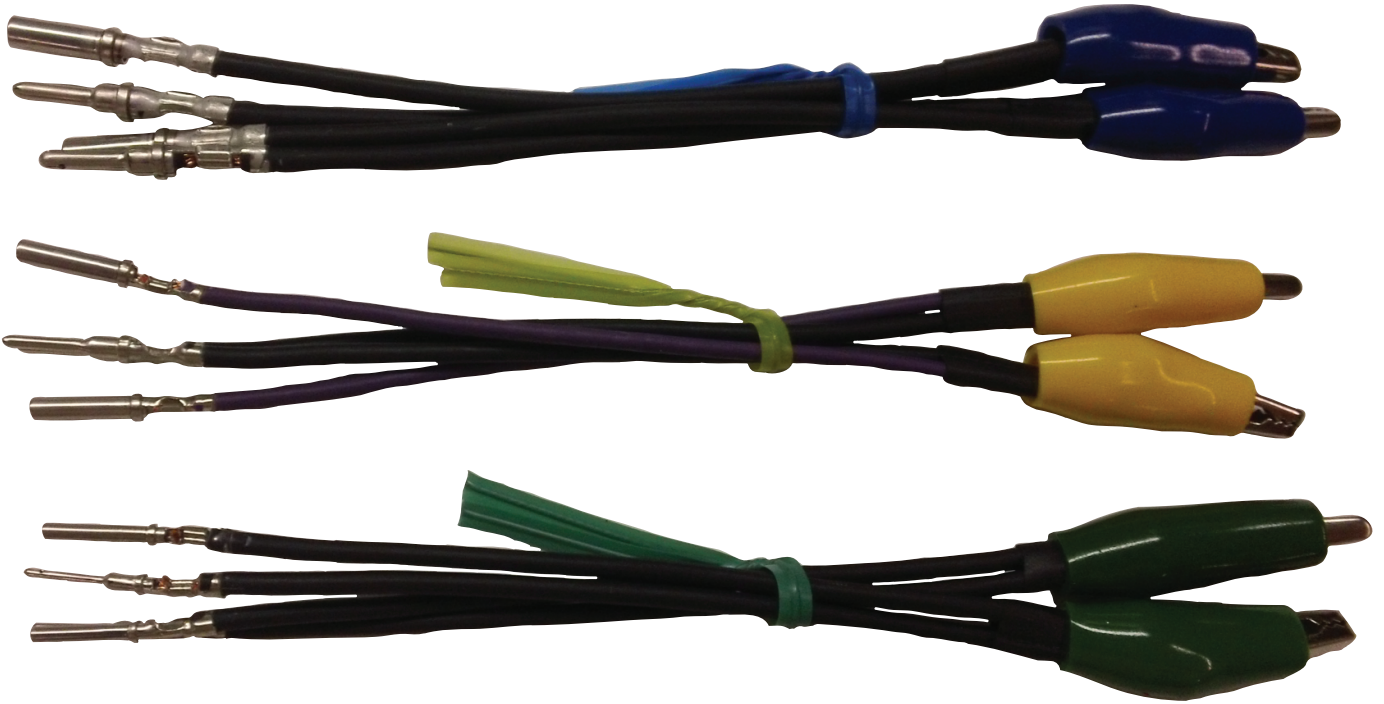


THEXTON

DEUTSCH JUMPER WIRE TEST KIT INSTRUCTION MANUAL
PART NUMBER 508



THEXTON MANUFACTURING COMPANY

6539 Cecilia Circle

Edina, MN 55439

(800) 328-6277

FAX: (952) 831-5938

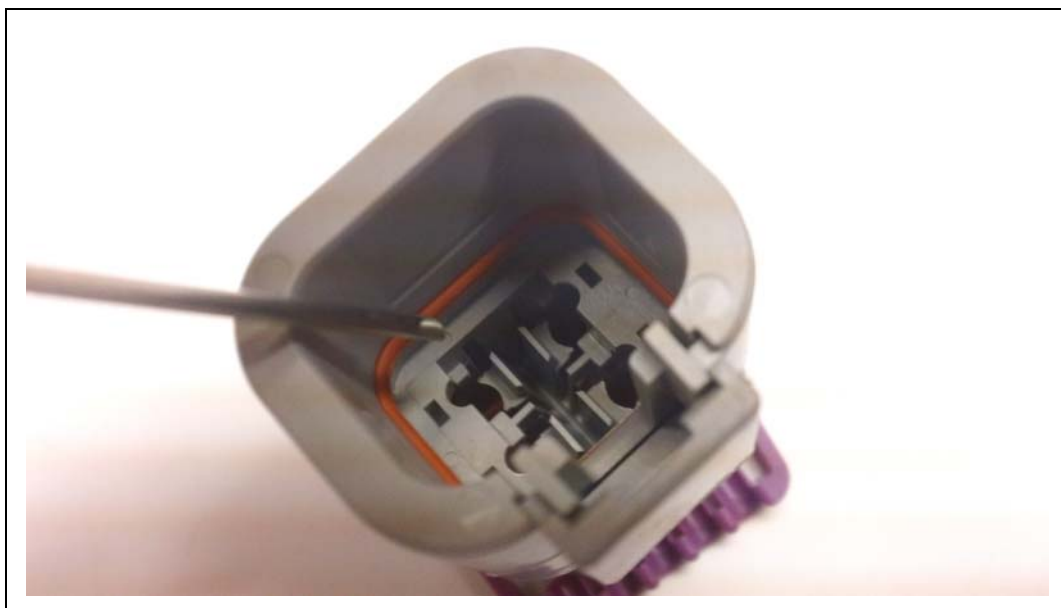
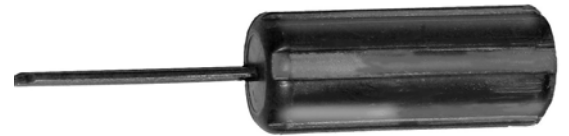
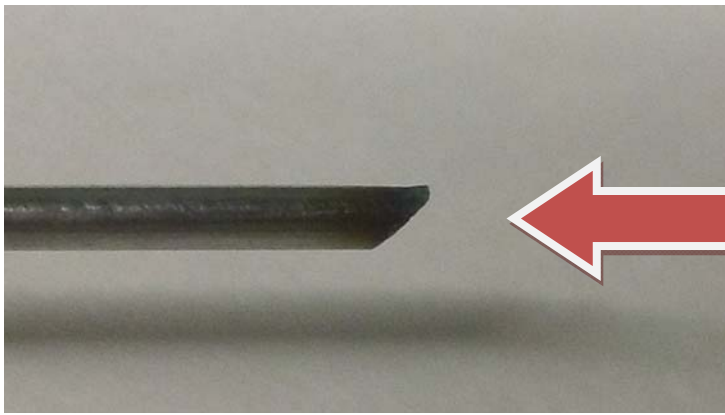
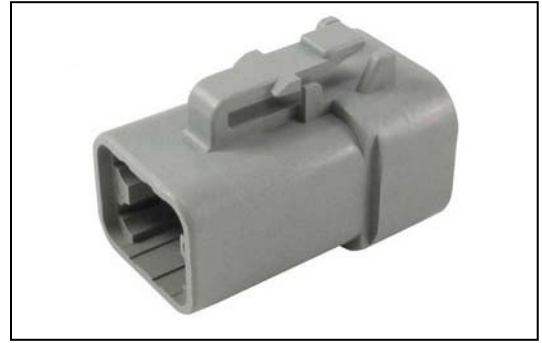
www.thextontools.com

Part No. 49304

Connector Manufacture: Tyco, Deutsch, Delphi

Series: Internal release connectors with medium to large release tabs.

Push wire forward and hold, then insert tool into the front of the connector next to terminal and push on the release tab to release the terminal. Gently pull wire out of the back of the connector.



Part No. 58801, 58802, & 58803

Connector Manufacture: Deutsch

Series: AEC, DRB, DRC, HD10, HDP20, HD30, HDFB, & WT

1. Tool and connector body, note the slot in the tool vs. the tabs in the connector.
2. When the tool is inserted into the connector, the slot of the tool must **NOT** be aligned with the tabs in the connector. (see illustration) If the tab inside of the connector is in the slot of the tool, the terminal will not release. The tool must be pulled out $\frac{1}{4}$ " and rotated 90 degrees. Once rotated, re-insert the tool into the connector. The tabs should release the terminal. If you rotate the tool while it is in the connector, the tab will break and the connector will have to be replaced.
3. Note that the tool must bottom out in the connector to move the tabs out in order for the terminal to release.



1. With rear insert toward you, snap appropriate size extractor tool over the wire of contact to be removed



2. Slide tool along into the insert cavity until it engages contact & resistance is felt.



3. Pull the contact-wire assembly out of connector

DEUTSCH JUMPER WIRES TESTING PROCEDURE

1. Disconnect connectors by releasing locking tabs. (Note: Some connectors may have secondary internal locks that may need to be removed using pliers)



2. Identify the desired circuit to be tested and select correct jumper wire. Insert male jumper wire into existing female contact and female jumper wire into existing male contact.



3. Test circuit using multimeter (Check service manual to determine correct reading)



4. Remove wires as necessary using tools supplied in kit

Replacement Parts

Part Number	Description
THX509	Set of (2) Contact Size 14 Jumper Wires (Blue)
THX510	Set of (2) Contact Size 16 Jumper Wires (Yellow)
THX511	Set of (2) Contact Size 20 Jumper Wires (Green)
TWX49304	Internal Release Tab Terminal Release Tool
TWX58801	20-24 AWG Contact Size Terminal Release Tool
TWX58802	16-18 AWG Contact Size Terminal Release Tool
TWX58803	14-16 AWG Contact Size Terminal Release Tool

Note: Attempting to plug wrong sized contact into existing assembly may damage contact and/or connector.